

Buffy: Customizable Toolbar UI Specs

Author: Patrice Caire

Date: 12/23/02

Latest changes: 1/13/02

The Broad vision is to allow users to move/add/remove anything they want to/from the toolbars as well as the toolbars themselves. Users should also be able to change the background color/theme.

Due to time constraints we created a scaled down version of this vision and concentrated our efforts on porting the Phoenix functionalities over and adapted it.

Note: This document is a UI spec and doesn't have any visual design.

CT 0.0 Open Issues

- Default settings for palettes check boxes and drop down, eg. Do we want/need a different one than the one shown in the palettes below (Rafael, all.)
- Search Menu List (list of options to be reviewed by Rafael.)
- Lori, Rafael and Samir to prioritize the buttons for each component.
- Marlon and Gail to give estimate for icon designs (time and number of icons.)

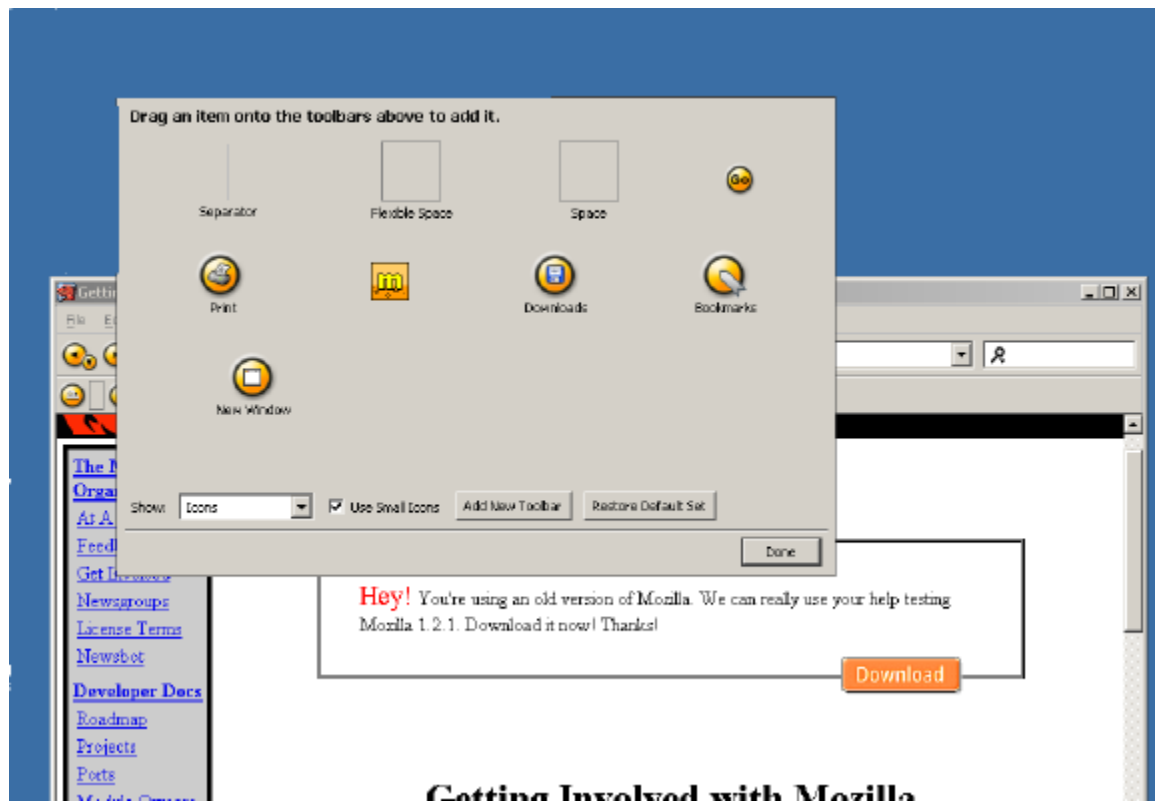
Here is the current Phoenix "Customize Toolbar" panel.



CT 1.0 Bring the functionality over from Phoenix

1. The Sheet Problem

The sheet of icons in Phoenix is not attached to the window. We propose to replace it either with a dialog box with toolbar on the top or a new type of sheet— **details are being worked out with Jag, Marlon and myself.**

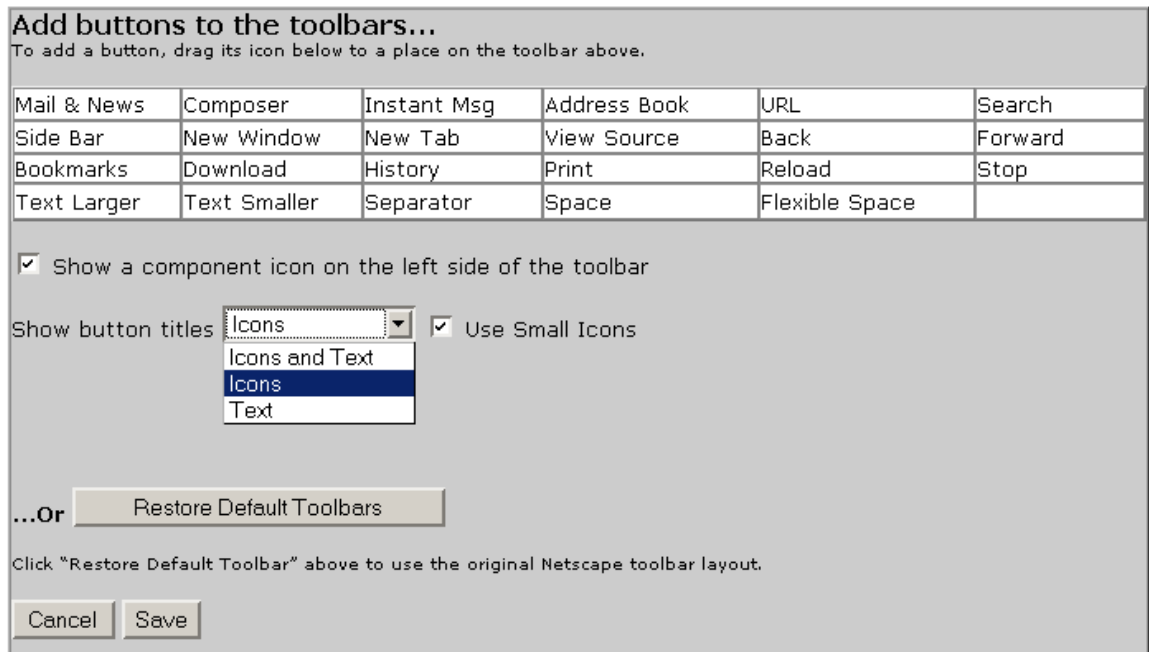


2. Design of the Palettes

They are composed of:

- Explanatory text concerning the new feature: How to customize and what are the Default toolbars set – the ones Netscape ships as default. (Jatin?)
- A grid of buttons
 - Buttons are draggable on all toolbars.
 - Icons that cannot be duplicated, like mail, will show a disabled state if already in the toolbar. Icons that can be duplicated, like separator and spaces, will keep showing an 'on' state even if already present in the toolbar. A precise list of each will be provided when the list of all the buttons is finalized.
 - Items already on TB are disabled on Palette. When removed from TB, become enabled again on Palette.
 - The Throbber is kept on the toolbar and not removable.
 - Users' Bookmarks and personal settings will be preserved and treated as separate from the navigation.
- Two check boxes:
 - Mast Head on (see Jatin text)
 - Use Small Icons
- A Menu List 'Show': 3 options: Icons and Text, Icons, Text.
- Three buttons:
 - Restore Default Toolbars: brings up a picture of the default Toolbars.
 - Save
 - Cancel

Browser Palette content to be finalized.



All Palettes will be the same as the Browser Palette above, except for the choice of buttons detailed below.

Mail Palette content to be finalized:

Address Book	Get Msgs	Compose	Reply	Reply All	Forward
File	Next	Delete	Junk	Print	Stop
Text Larger	Text Smaller	Separator	Space	Flexible Space	

Mail Compose Palette content to be finalized:

Send	Address	Attach	Spell	Security	Save
Quote	Print				
Separator	Space	Flexible Space			

Newsgroups Palette content to be finalized:

Address Book	Get Msgs	Compose	Reply	Reply All	Forward
File	Next	Junk	Print	Subscribe	Stop
Mark	Text Larger	Text Smaller	Separator	Space	Flexible Space

Address Book content to be finalized:

New Card	New List	Properties	Compose	IM	Sync
Delete	Stop	Print			
Text Larger	Text Smaller	Separator	Space	Flexible Space	

Composer Palette content to be finalized:

Open WEb Loc	Recent Pages	Save As...	HTML Source	Preview	Search
New	Image	Save	Publish	Table	Link
Separator	Space	Flexible Space			

IM Palette content to be finalized:

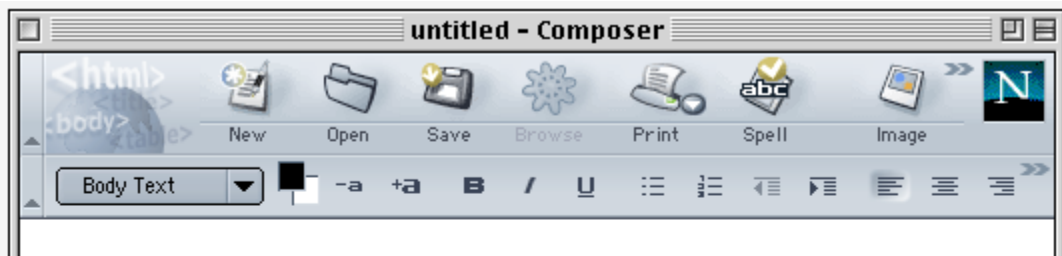
Add Buddy	Warn	Block	Print	Save	
Separator	Space	Flexible Space			

Chat Palette content to be finalized:

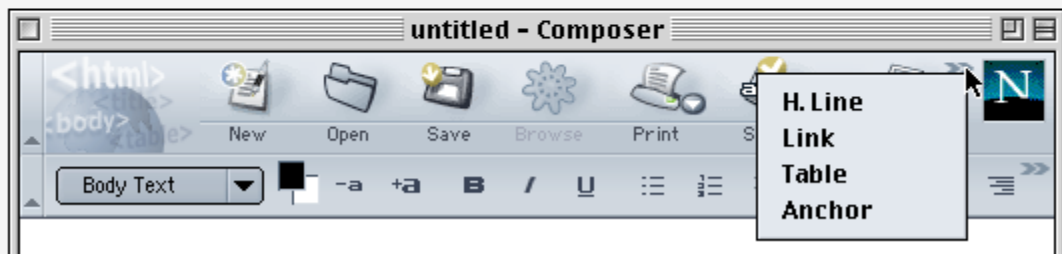
Invite	Room Info	Print	Save		
Separator	Space	Flexible Space			

CT 2.0 Overflow

The formatting toolbar from Marlon Bishop's previous specs (see below) will be used. The 'cycling icons' option (like a ribbon, see some IE applications) was rejected for lack of time.



Overflow Markers on the main toolbar, and the formatting bar



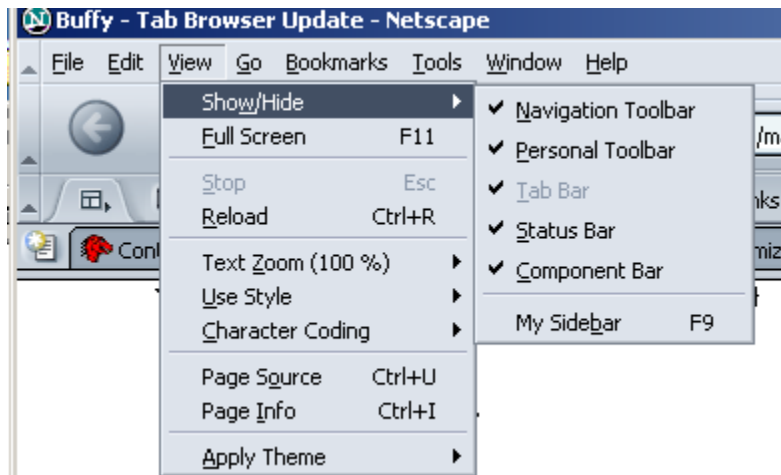
Overflow Marker with Menu

CT 3.0 Entry Point to Toolbar

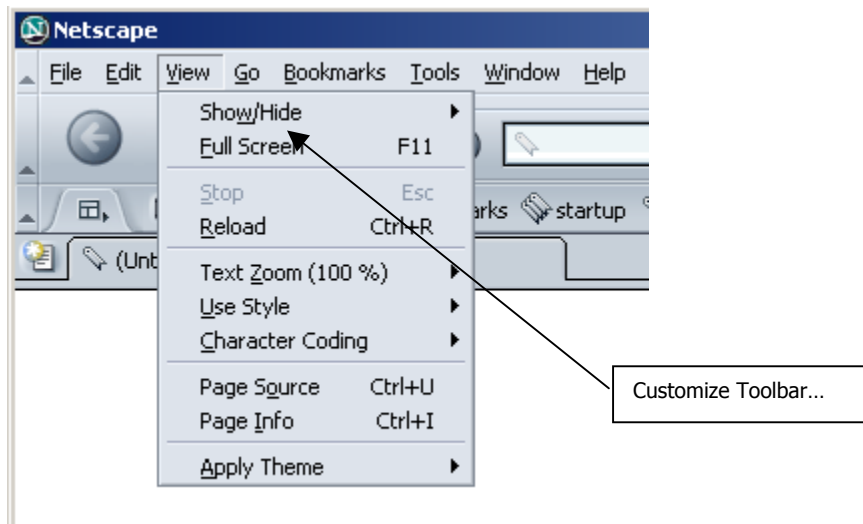
There are 2 Entry points to the toolbar customization function:

1. Through the View Menu

Here is the existing Navigator View Menu extending the Show/Hide components:



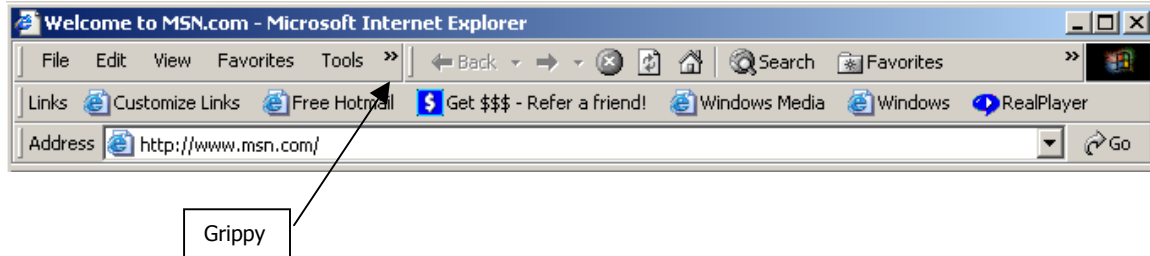
We will add a "Customize Toolbar..." menu item just below the "Show/Hide" in the View Menu.



2. Right click on the toolbar brings up a context menu with the option "Customize Toolbar..."

CT 4.0 Repositioning Toolbar [not in this release]

As with IE, users can reposition their buttons by dragging a grippy throughout the toolbar. Rafael is checking on data on the use of this functionality.



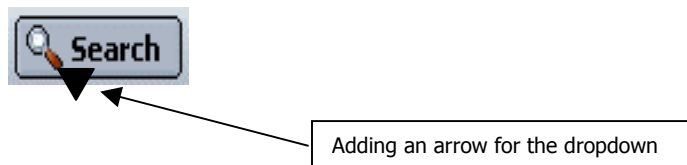
CT 5.0 Search

1. Changes to the Navigation toolbar

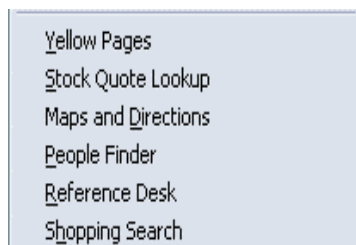
The Search box is removed from the toolbar. A 'GO' button that applies to the URL box is added next to it.

2. The Search Menu List

Search is now a customizable option.



- One click on the magnifying glass or on the Search text brings up the "Search the Web" page.
- One click on the new down arrow placed between the magnifying glass and the Search text drops down the Menu list (list of options to be reviewed by Rafael.)



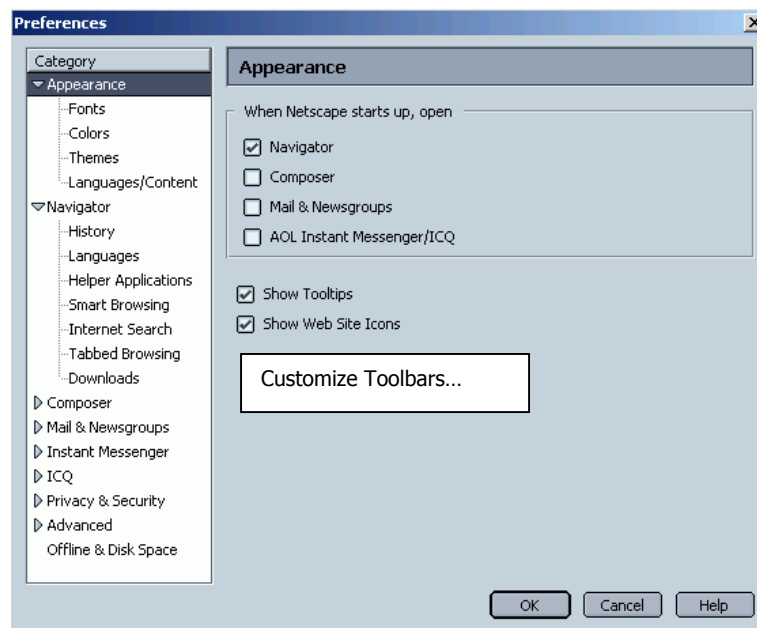
CT 6.0 Closed Issues:

1/3/03

- Can't move tool bars, can't reorder them, can't add a new one.
- Can't add new tools besides the ones in the palettes.
- Toolbar size determines the size of buttons.
- Space, flexible space and separator will be visible in Edit mode only, eg. When palette is open.
- One can only reorder buttons when palette is open.
- The only button one can't remove is the Throbber
- Formatting bar stays by itself on its own bar and cannot be customized.
- The 'cycling icons' option (like a ribbon, see some IE applications) was rejected for lack of time.

1/5/03

- Place of the "Customize Toolbar..." menu item: just below the "Show/Hide" in the View Menu
- We decided not to add a "Customize Toolbar..." button as a new option in the 'Appearance' menu panel -- Edit menu → Preferences → Appearance because it would create a second entry point within the Pref panel. We are removing the "Show toolbars" option.



1/8/03

- Explanatory text done + Mast Head terminology (Jatin)
- Text Larger and Text Smaller buttons removed from all palettes where a Formatting toolbar is available.

- Text Larger and Text Smaller buttons should be available whenever you can view content.
- The Preferences panel is where users currently 'customize' their toolbars -- Edit menu → Preferences → Navigator. We are removing the current "Select the buttons you want to see in the toolbars" box to keep the customize toolbar functionality in the View Menu. We also removing the customize option from Mail.

